

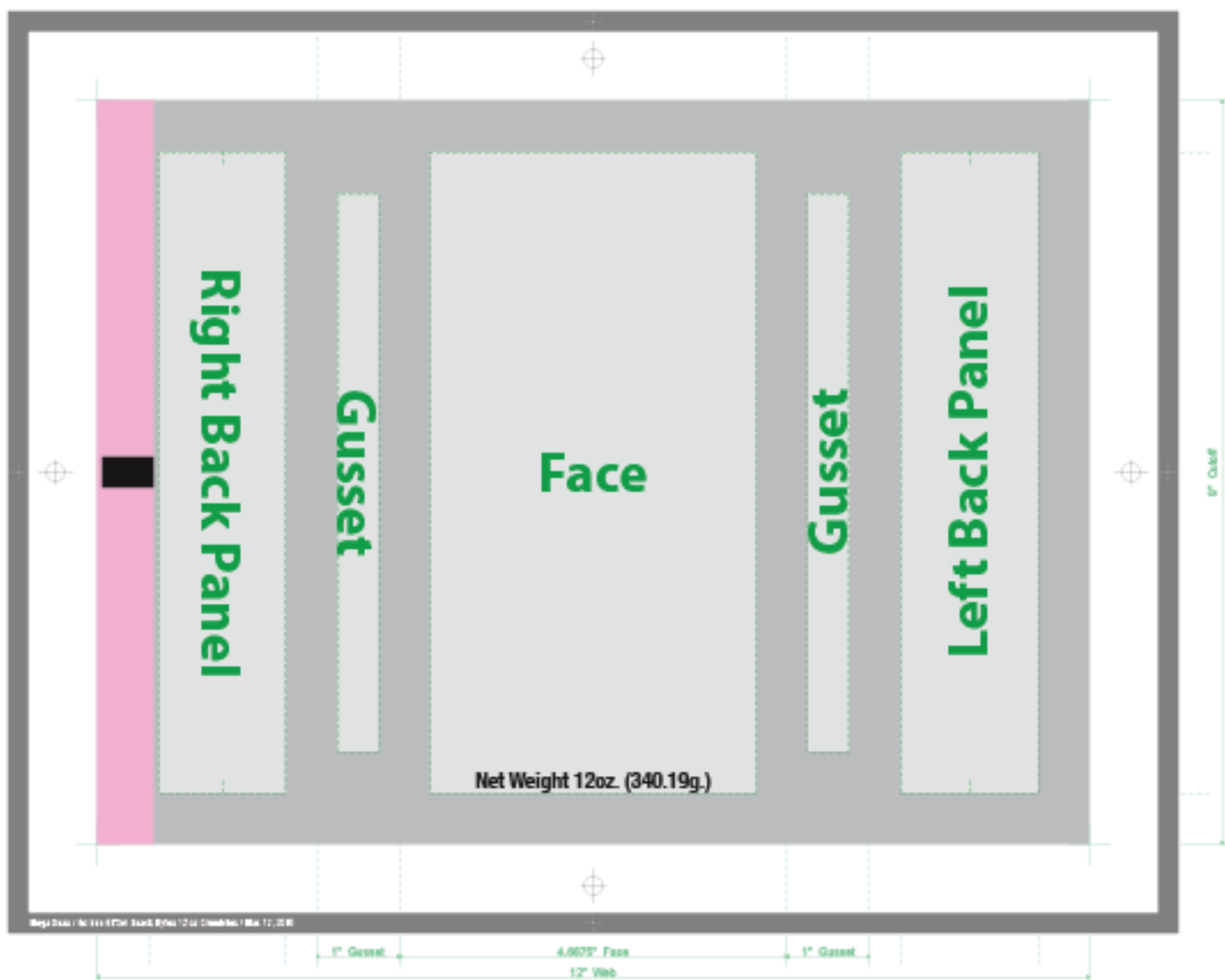
Getting Started

Place the Bag72a plug-in file (Bag72a.aip) in your Illustrator CS3 or CS4 Plug-ins folder, in the Illustrator Application folder. After launching Illustrator, the Bag72a menu command will appear under the Object menu. Selecting the Bag72a menu item will open the first input dialog - Job Information. While running in demo mode (25 tries), this pane will include the Registration file save button and the Activation Key entry button.

What it Does

Bag72a creates templates for flexographic packaging. The completed layouts include:

- Customer and Contents Information
- Options for Seal Types (lap, standard and offset fin seals)
- Bearer Bar with Microdots, Registration Marks and Dimensions (MM or inches)
- Eyespot and Track Placement
- Graphic Safe Areas for Face, Gusset and Back Panels

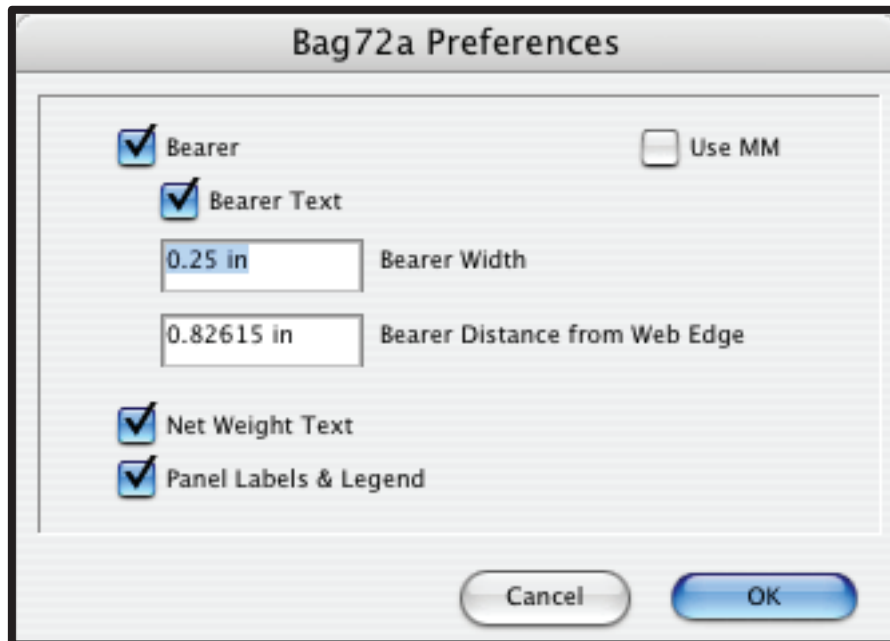


Golden Glitter Bytes 12 oz. Crumblies Template

	Printable Area / Full Coverage / Copy OK	<p>Please do not place copy in limit areas.</p> <p>The net weight mark on this template is of the minimum legal height. If the font is changed, it should be made to match the height of the provided version to ensure compliance with federal standards.</p>
	Limit Area / Full Coverage / No Copy	
	Non-Printable Area / No Coverage / No Copy	

Preferences

Clicking the "Set Prefs" button in the first pane opens the preferences dialog. Here you can choose to use inch or millimeter measurement units, turn on or off the bearer, net weight text, panel labels and set the width and offset of the bearer.



The "Bag72a Preferences" dialog box contains the following settings:

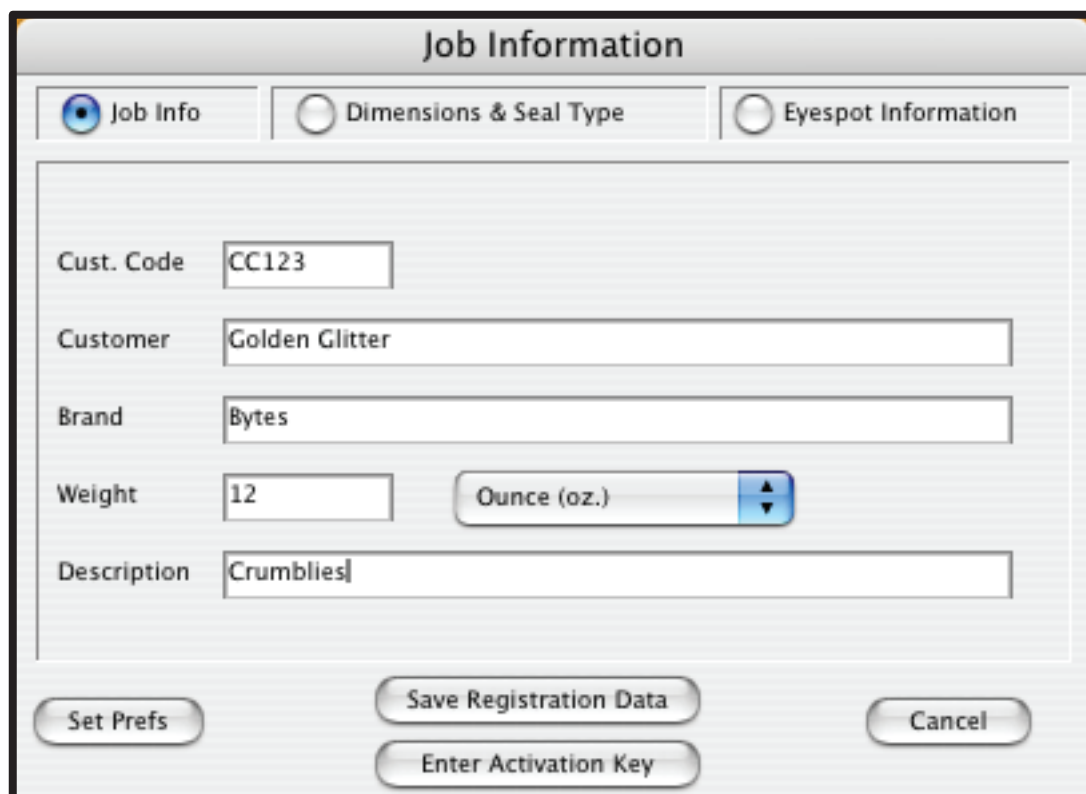
- Bearer Use MM
- Bearer Text
- Bearer Width:
- Bearer Distance from Web Edge:
- Net Weight Text
- Panel Labels & Legend

Buttons: Cancel, OK

Job Information

The first pane is for the entry of job information. The Customer, Brand, Weight, Description and current date will be set in reverse text in the lower left corner of the bearer. The Net Weight will be set in the appropriate text size on the face panel. The Customer Code, Customer, Weight and Description will be set in the title text above the legend box.

When you have completed this section, click the "Dimensions & Seal Type" button at the top to continue.



The "Job Information" dialog box has three tabs: Job Info (selected), Dimensions & Seal Type, and Eyespot Information.

Fields and values:

- Cust. Code:
- Customer:
- Brand:
- Weight:
- Description:

Buttons: Set Prefs, Save Registration Data, Enter Activation Key, Cancel

Job Dimensions & Seal Type

Job Info
 Dimensions & Seal Type
 Eyespot Information

Web Width: Seal Type:

Cutoff:

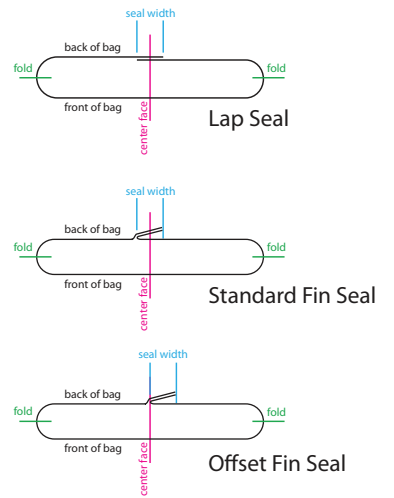
Face Width:

Seal Width:

Job Has Gusset
Gusset Width:

Always Verify Seal Width
Click the Calculate Face or Seal Width buttons before continuing to the next step.

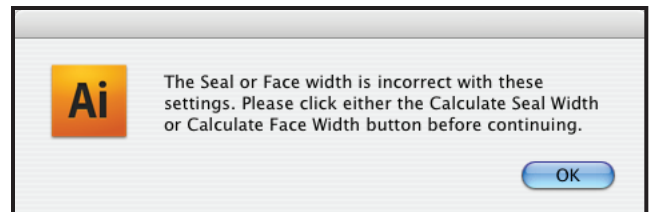
Cross section view of a formed bag



Job Dimensions and Seal Type

This pane is where you will enter the web width, cutoff, face width and seal width dimensions. When the "Always Verify Seal Width" box checked, Bag72a will make sure your dimensions are correct for the gusset and type of seal selected before allowing you to continue to the next pane.

If you see this alert, click on the "Calculate Face Width" or "Calculate Seal Width" button to correct the appropriate dimension.



Eyespot

Job Info
 Dimensions & Seal Type
 Eyespot Information

Position: Left Same Right

Horizontal:

Vertical:

Amount:

Dimensions:

Width:

Height:

Eyespots

Eyespots can be specified on the left, right, both or neither side. Eyespot positions and dimensions can be matching or set independently on the cutoff, centered or a specified distance from the cutoff.

Build It

After all information is entered, click the "Build Template" button to create a new document with your layout. The demo will create 25 complete templates before expiring.

Questions?
info@worker72a.com
www.worker72a.com